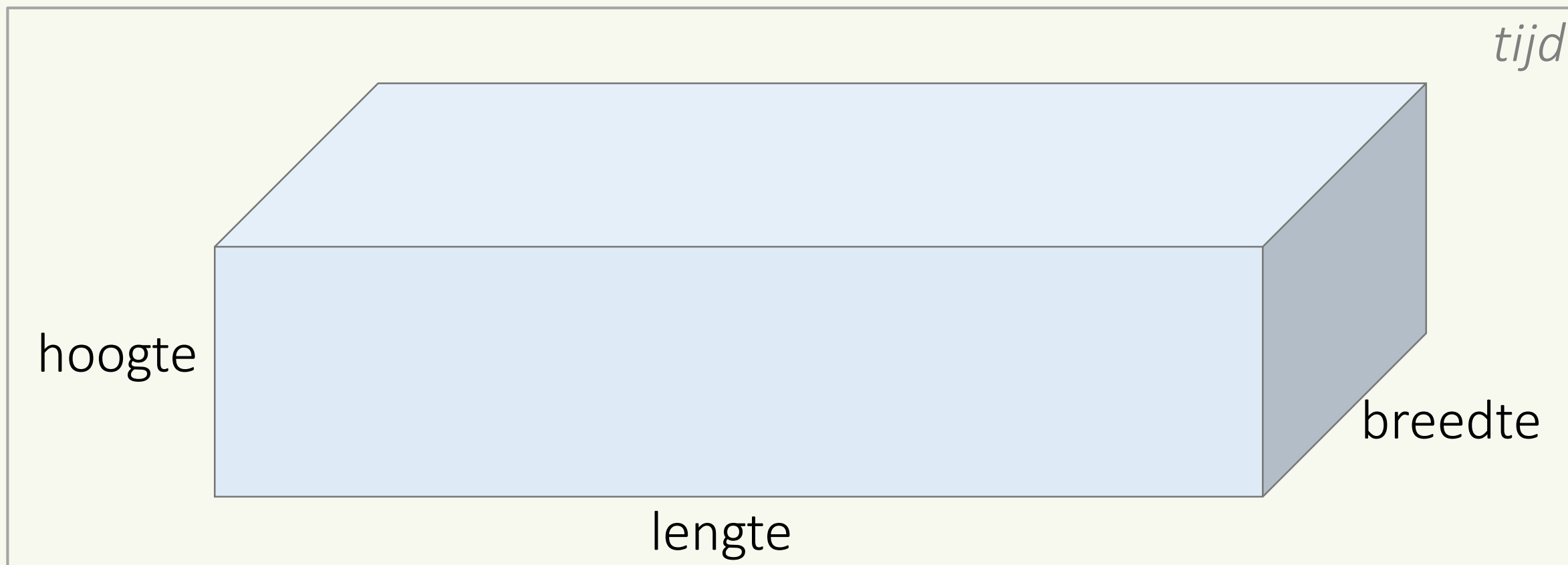
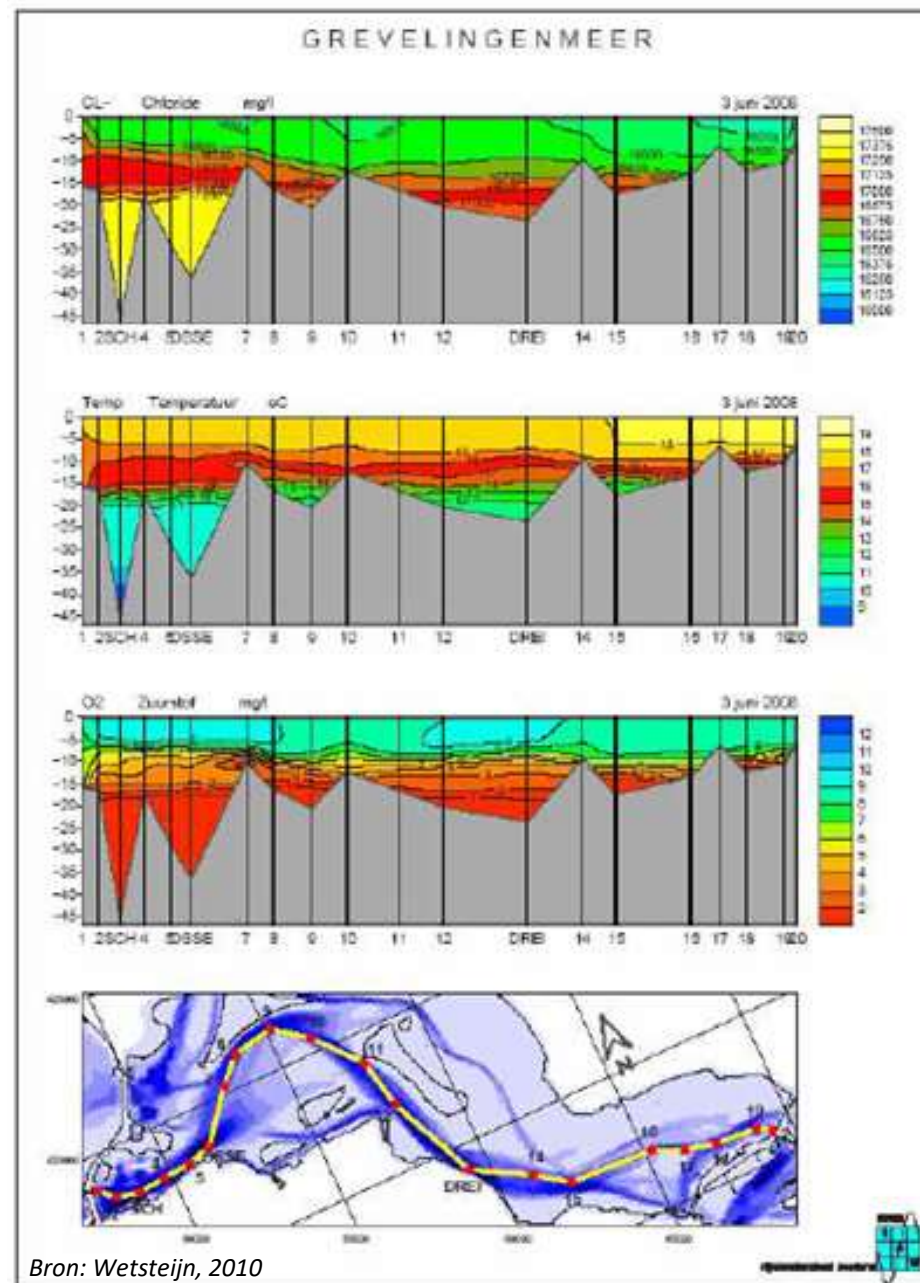


Vismonitoring Grevelingenmeer 2017 - 4D sampling

Vissennetwerk

Jochem Hop, ATKB
13-06-2019





Hoe brengen we de visstand in een dynamisch systeem als het Grevelingenmeer in beeld?

Boomkor (105 trajecten)

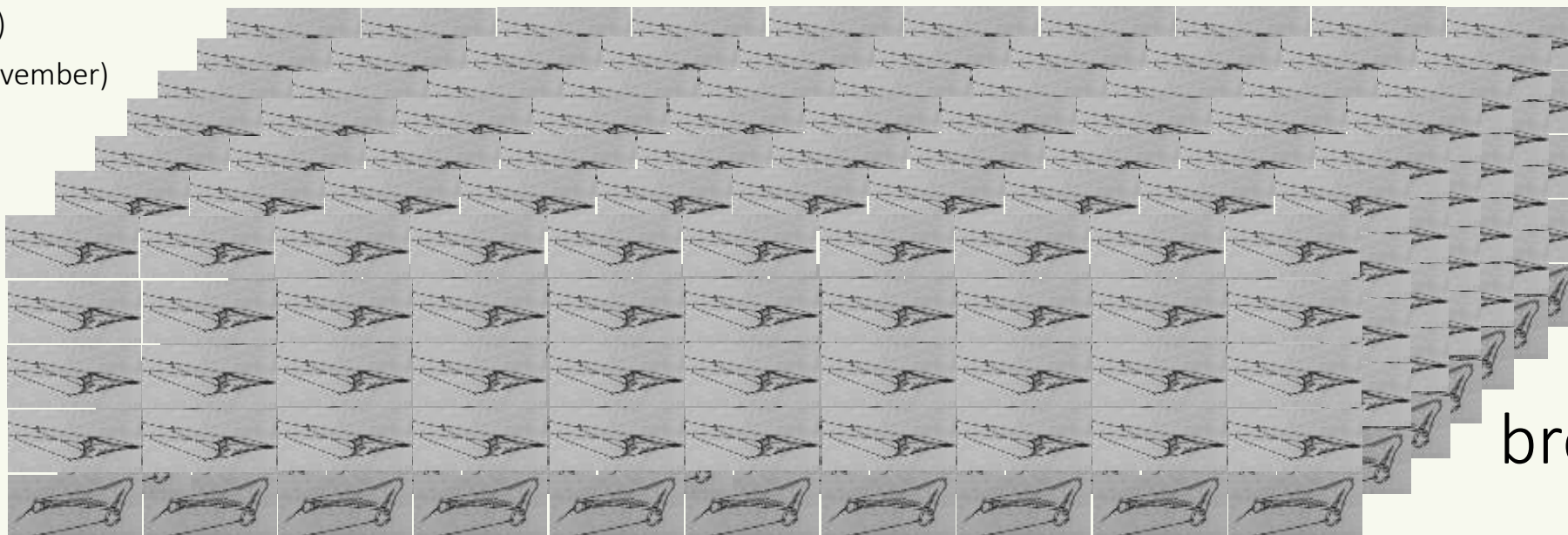
Pelagische kuil (65 trajecten)

Voorjaar (april/mei)

Najaar (oktober/november)

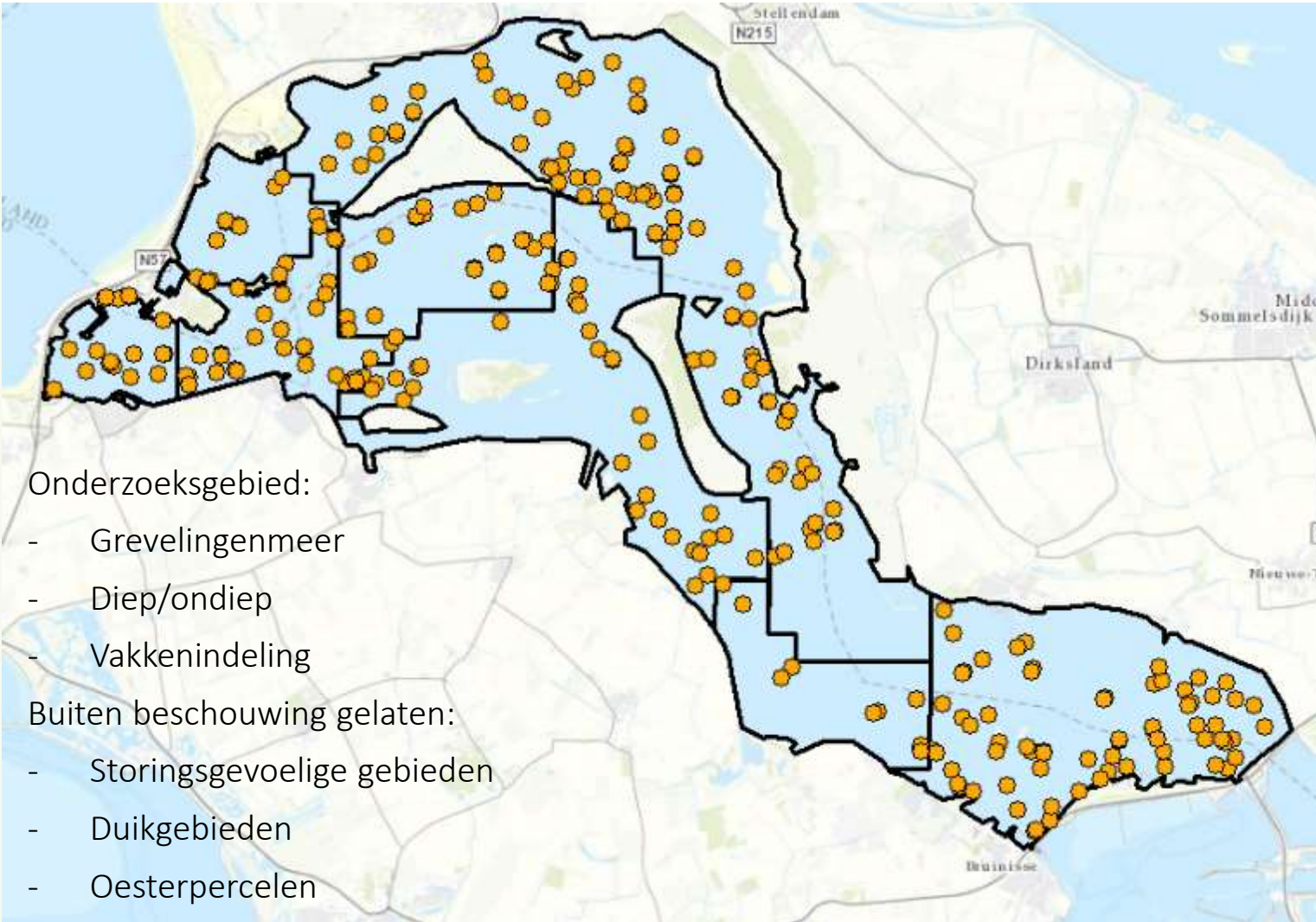
Voorjaar/najaar

hoogte

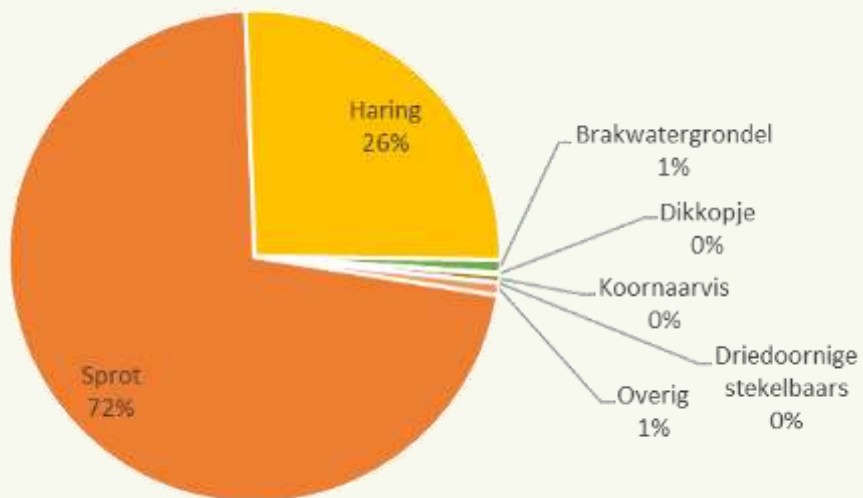


breedte

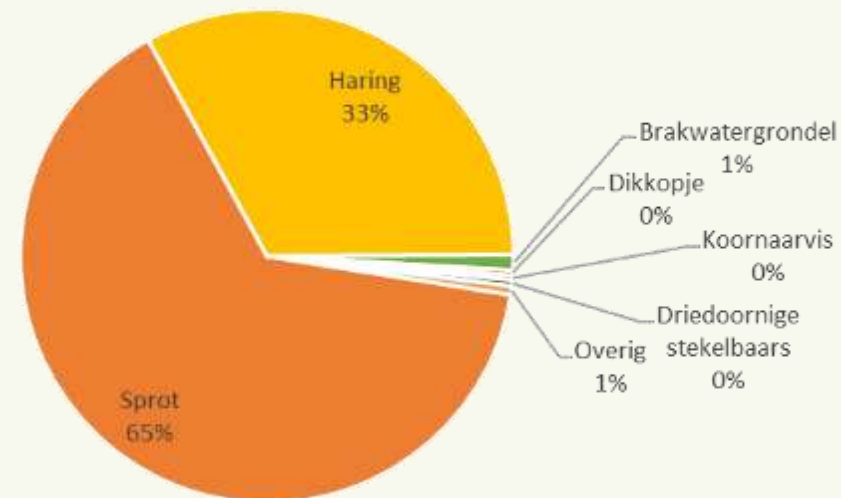
lengte



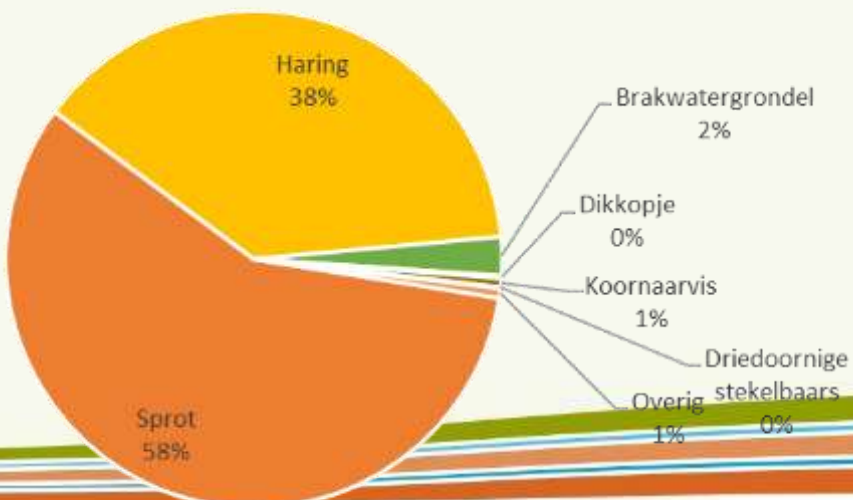
Voorjaar: 13,6 kg/ha



Najaar: 16,3 kg/ha



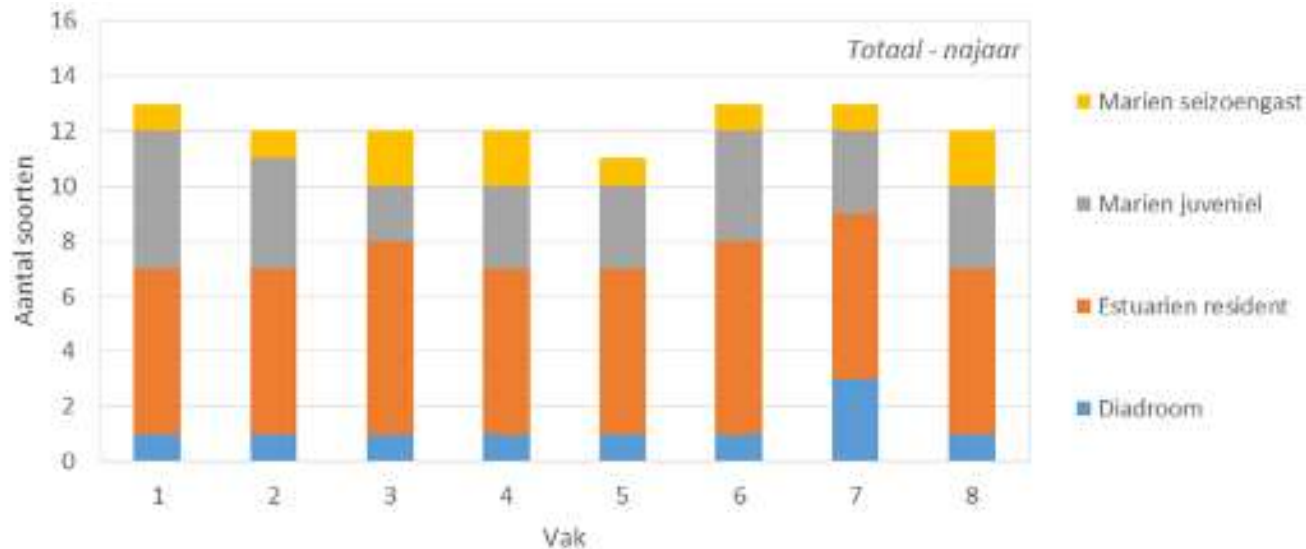
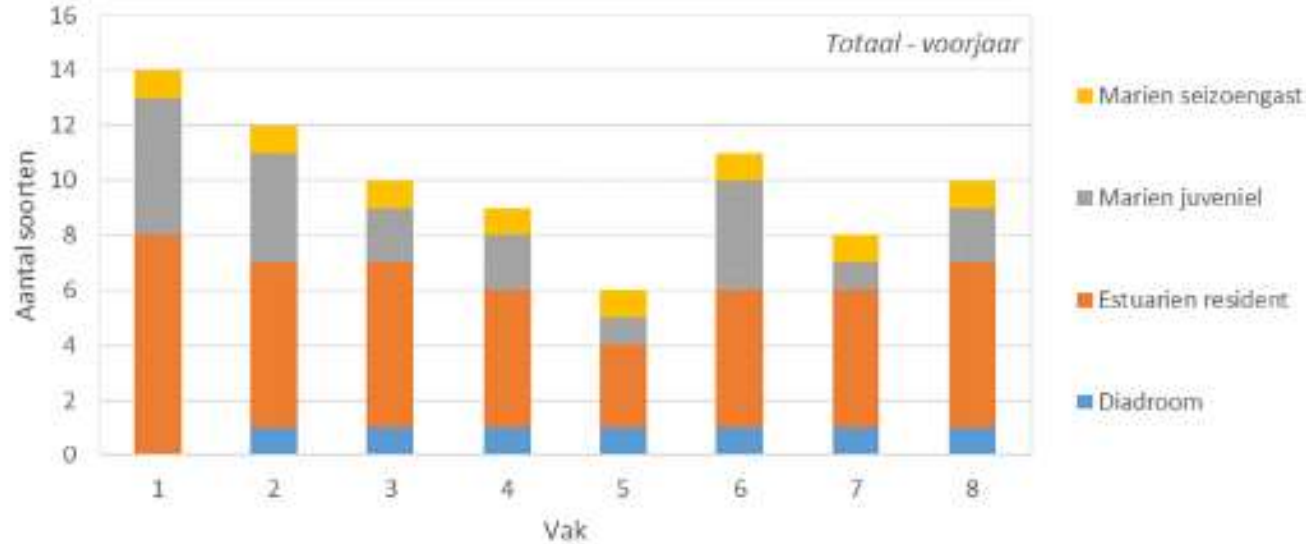
Voorjaar: 4.954 n/ha



Najaar: 2.932 n/ha

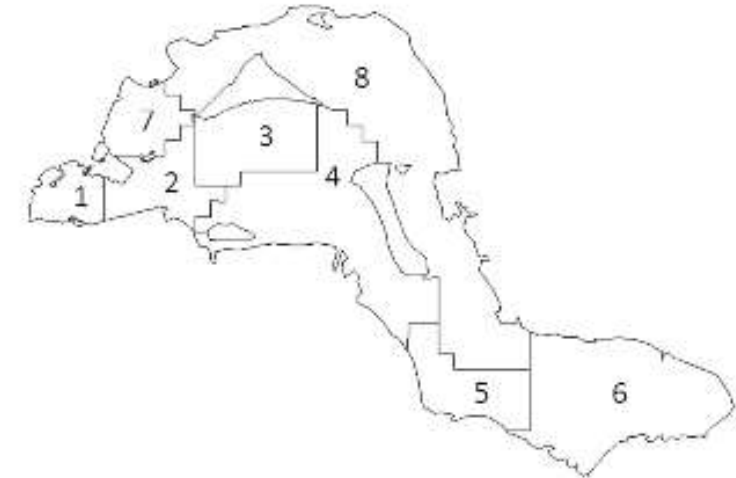


1. Invloed spuisluis



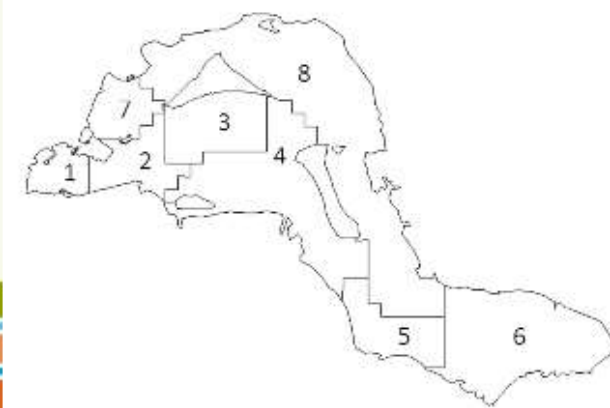
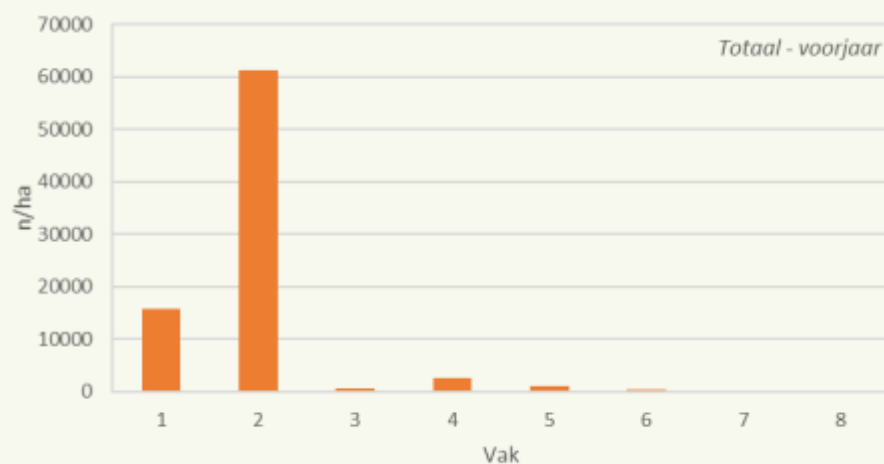
Soorten als glasgrondel, Lozano's grondel, zeedonderpad, schar, schol, steenbolk en wijting vooral bij Brouwerssluis.

In najaar meer vissoorten in waterkolom (driedoornige stekelbaars, grote zeenaald, koornaarvis en harder)



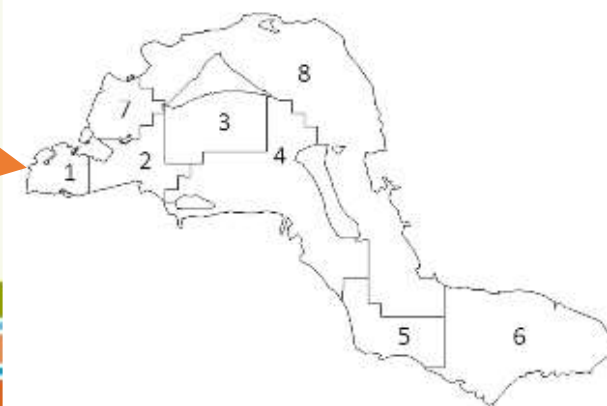
1. Invloed spuisluis

Meeste vis nabij
Brouwerssluis en in
mindere mate Flakkeese
spuisluis.

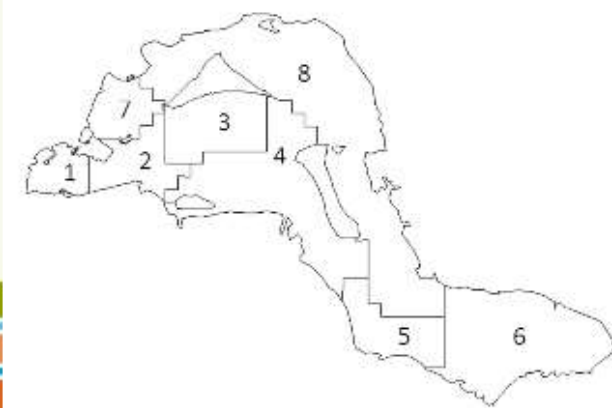
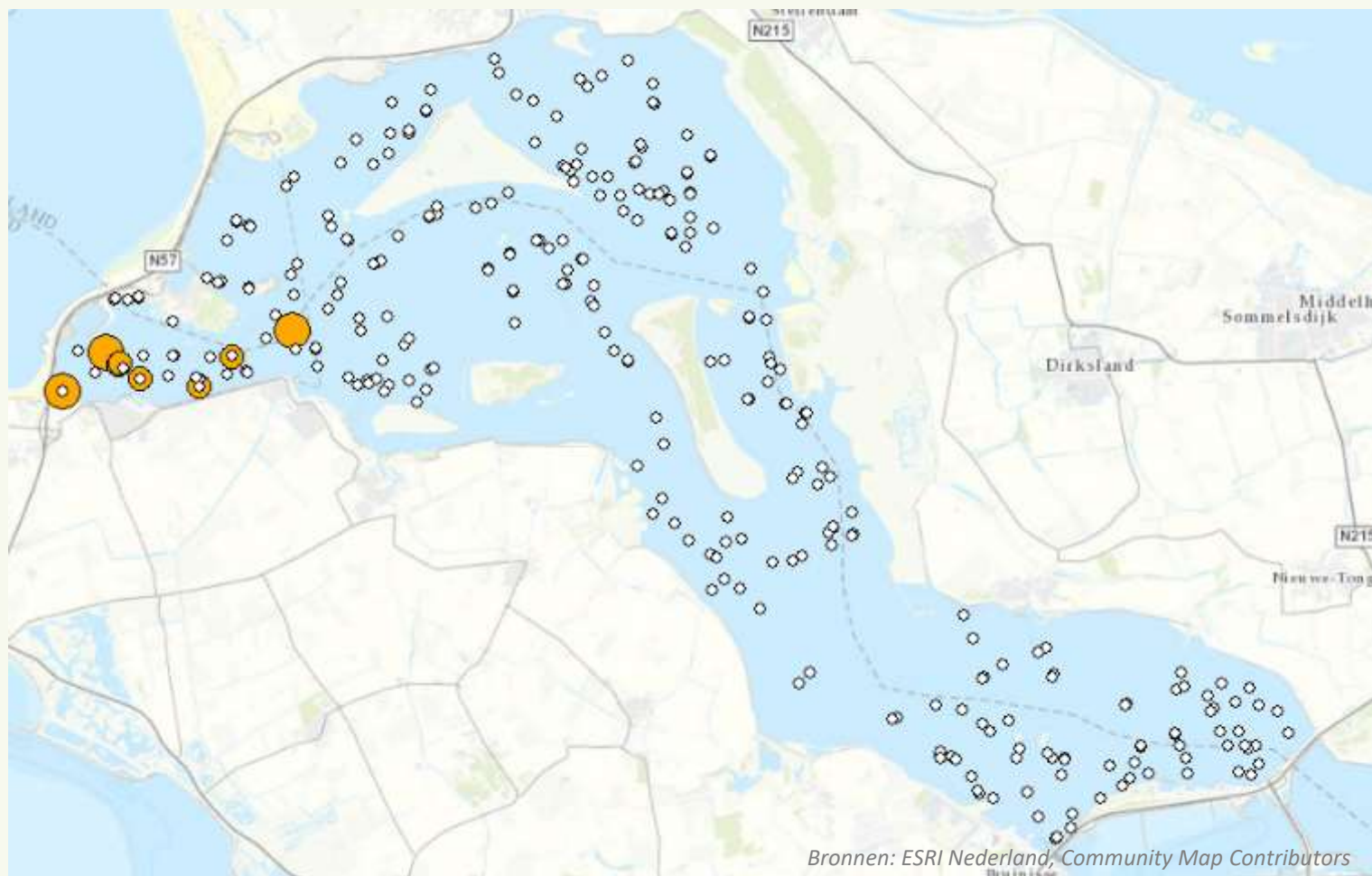


1. Invloed spuisluis

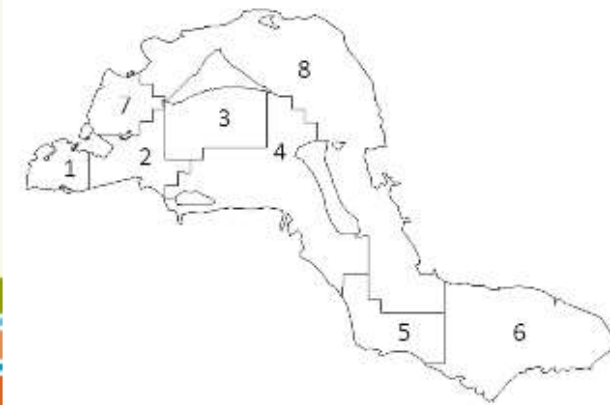
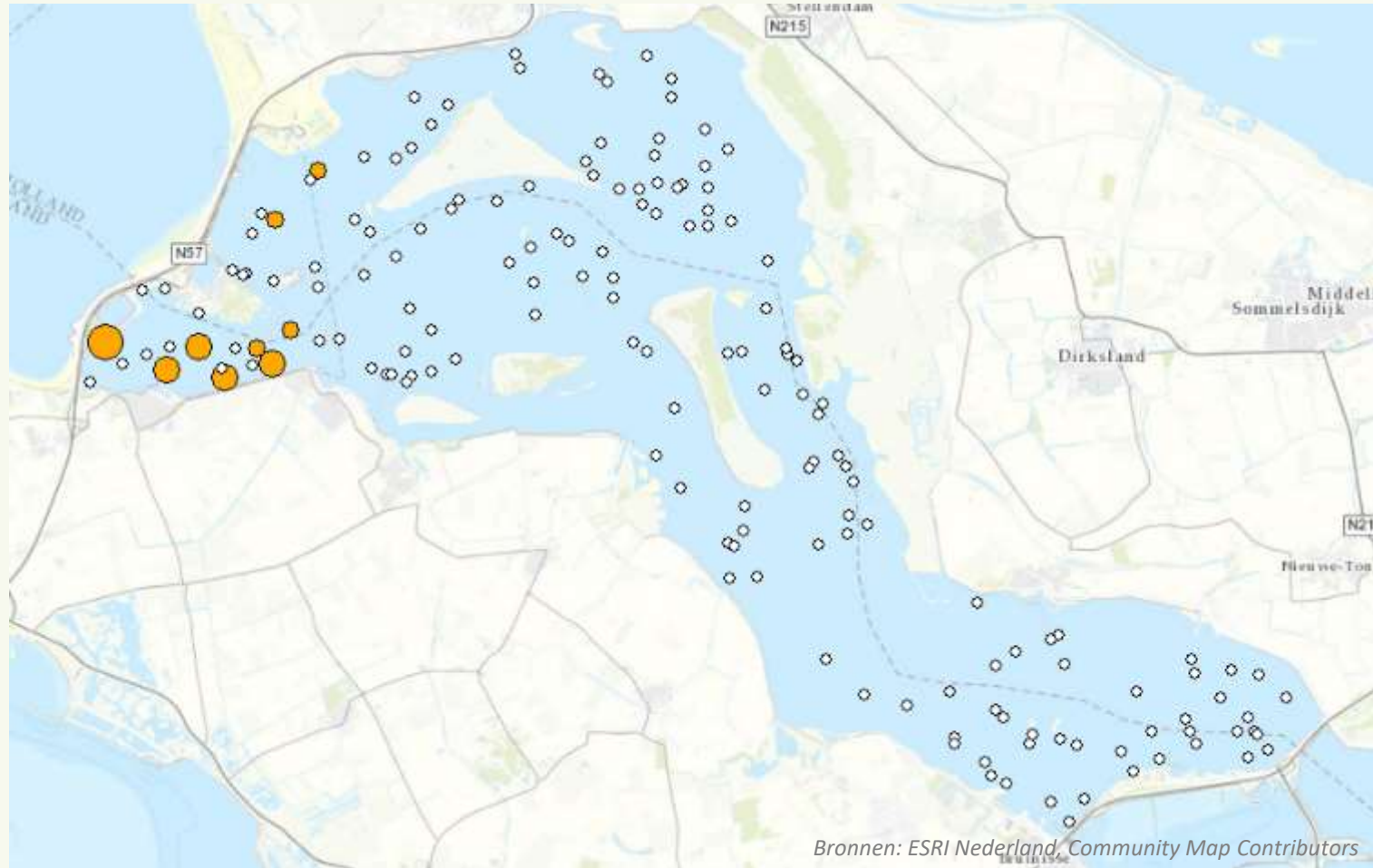
Meeste vis nabij
Brouwerssluis...



1. Invloed spuisluis



1. Invloed spuisluis



Flakkeese spuisluis sinds maart 2017
weer in werking...

1. Invloed spuisluis



Afbeelding: Rijkswaterstaat

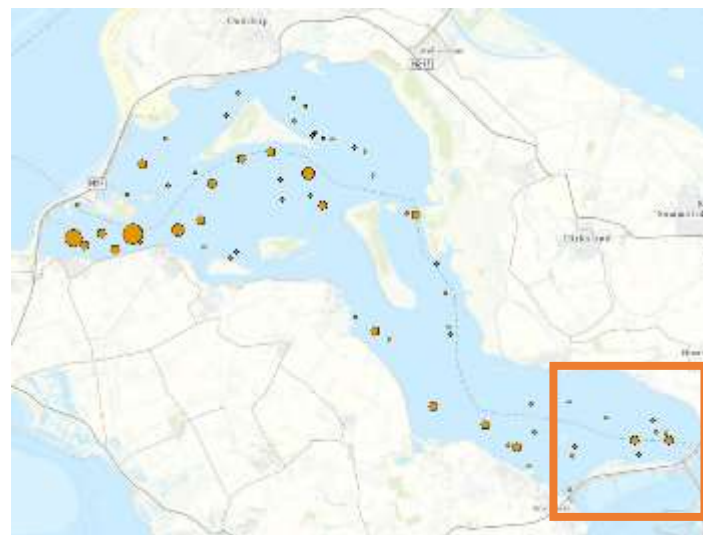
Eerste resultaten positief...

Hogere zuurstofconcentraties
nabij bodem, lagere bedekking
met witte bacteriematten en
minder schade aan bodemleven
(Didderen & Driesen, 2017)...

Doorlaatmiddel Brouwersdam

Haring

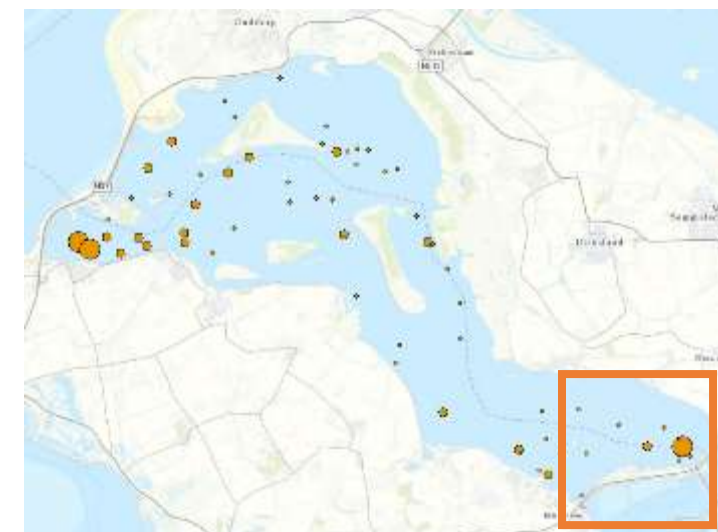
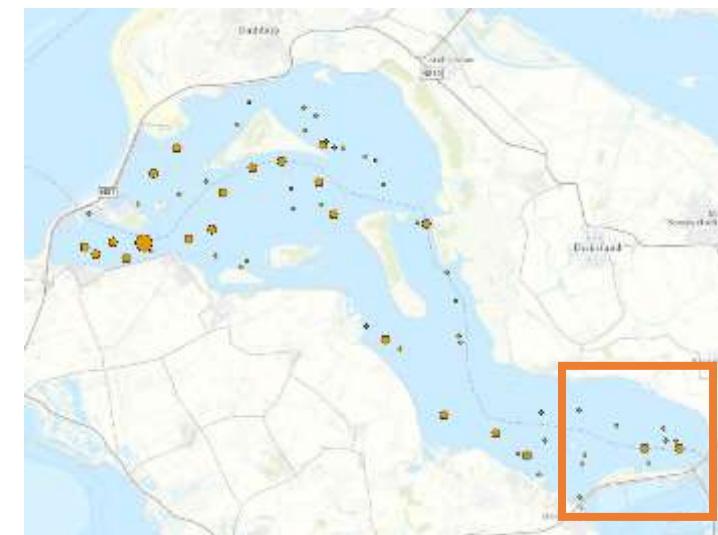
voorjaar



najaar



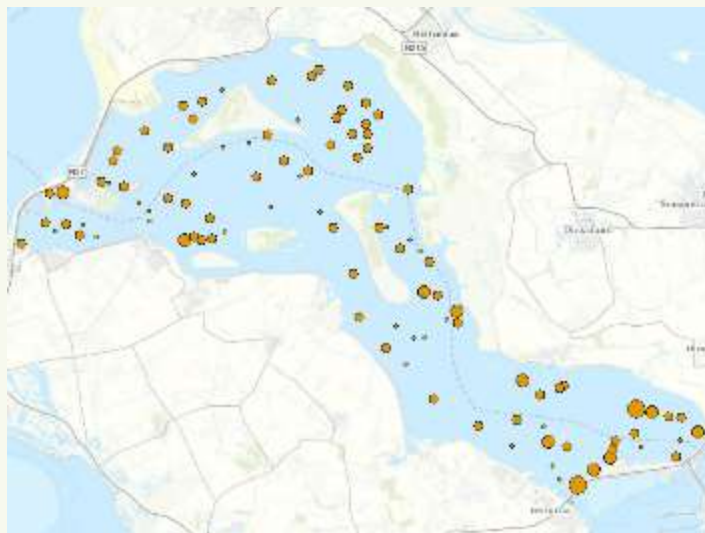
Sprot



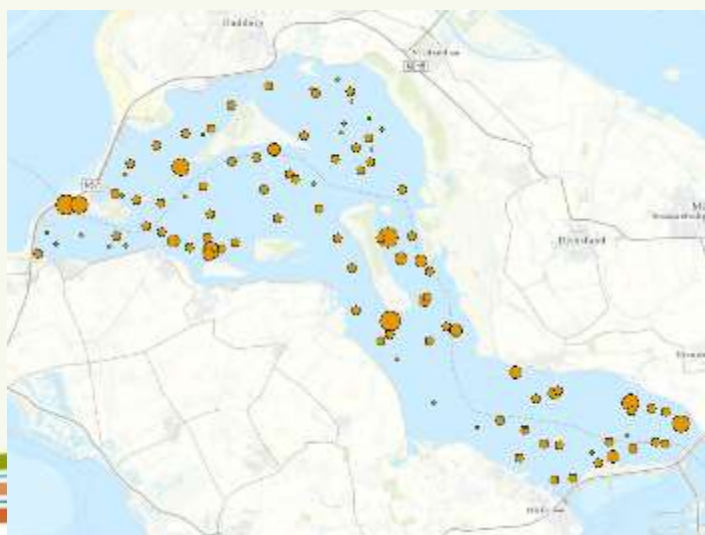


Brakwatergrondel

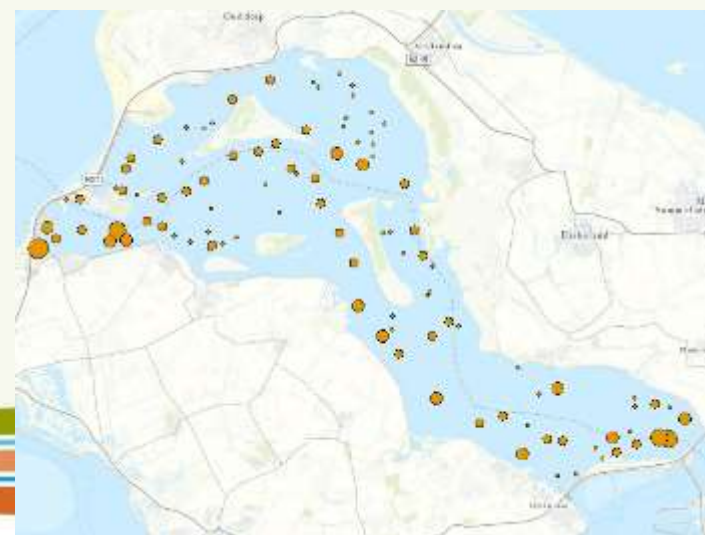
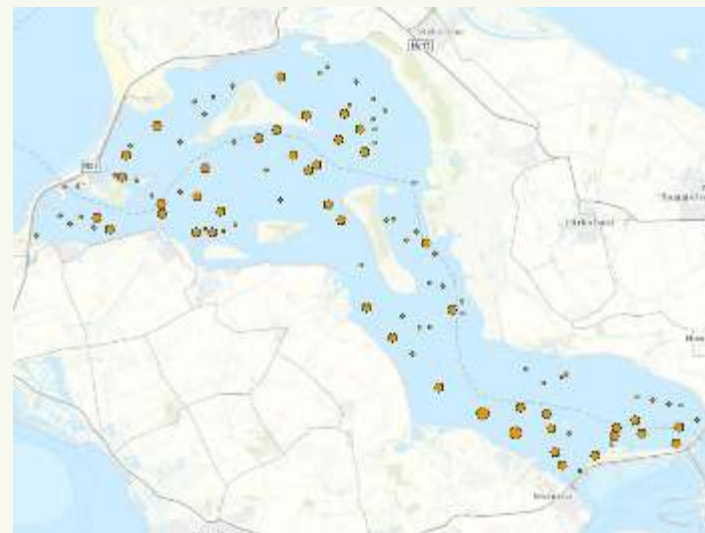
voorjaar

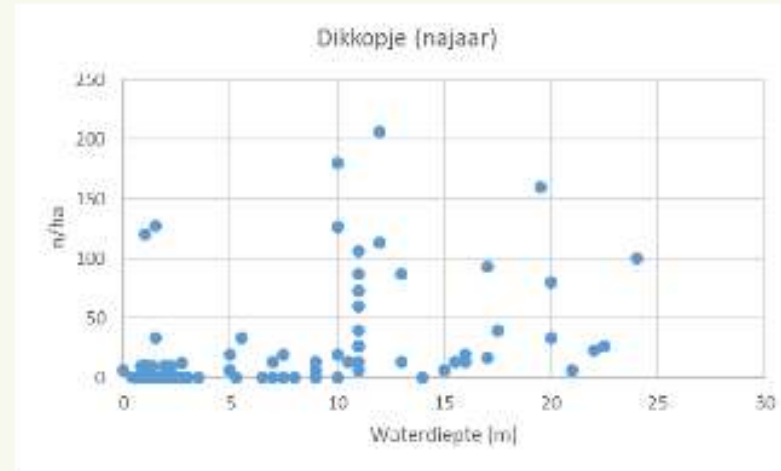
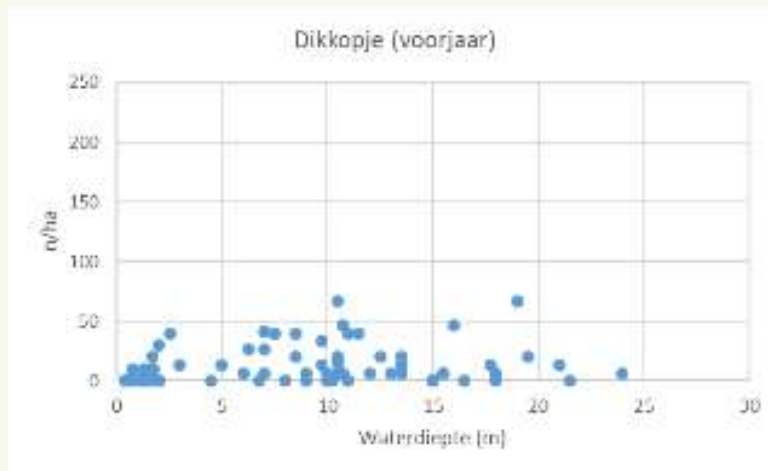
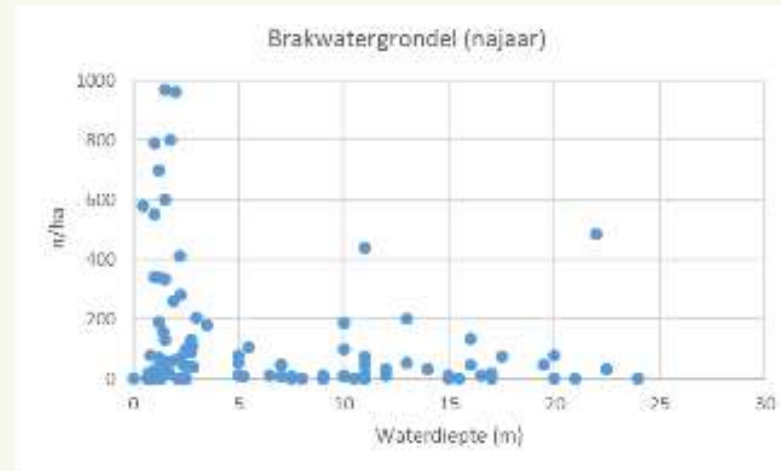
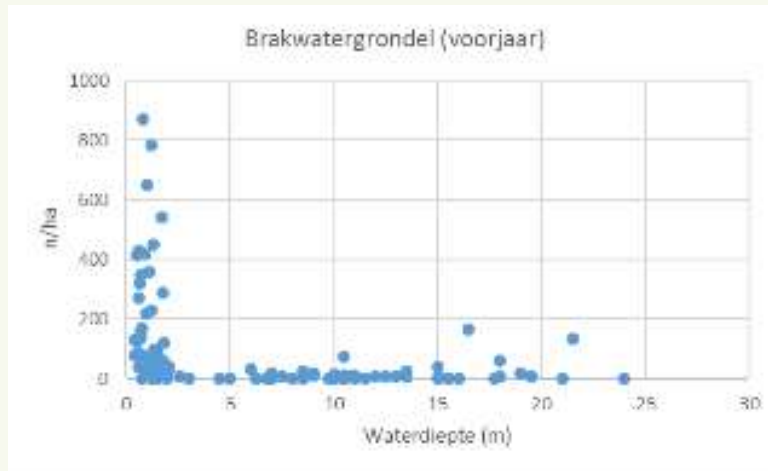


najaar

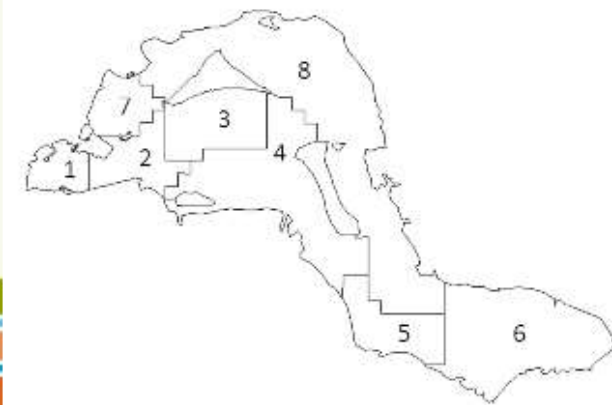
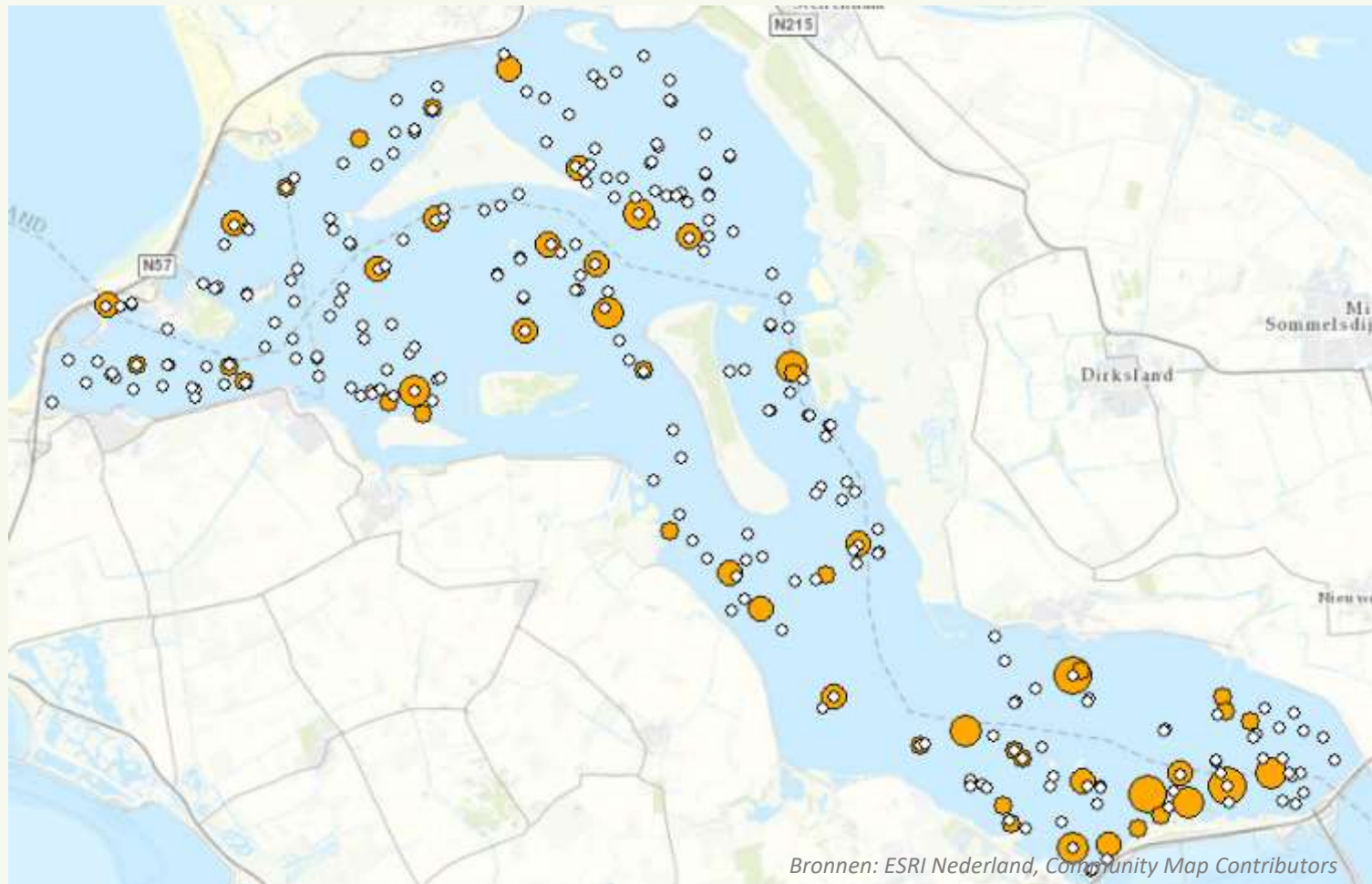


Dikkopje

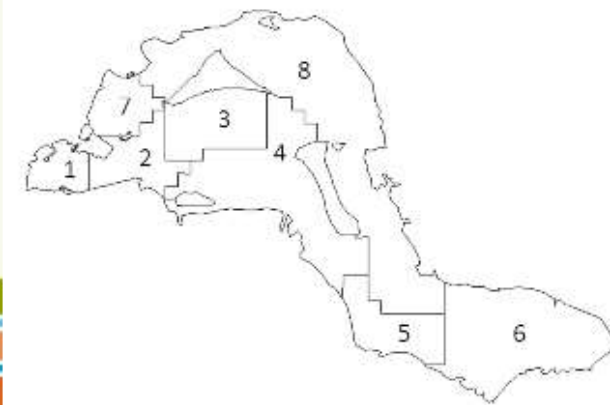
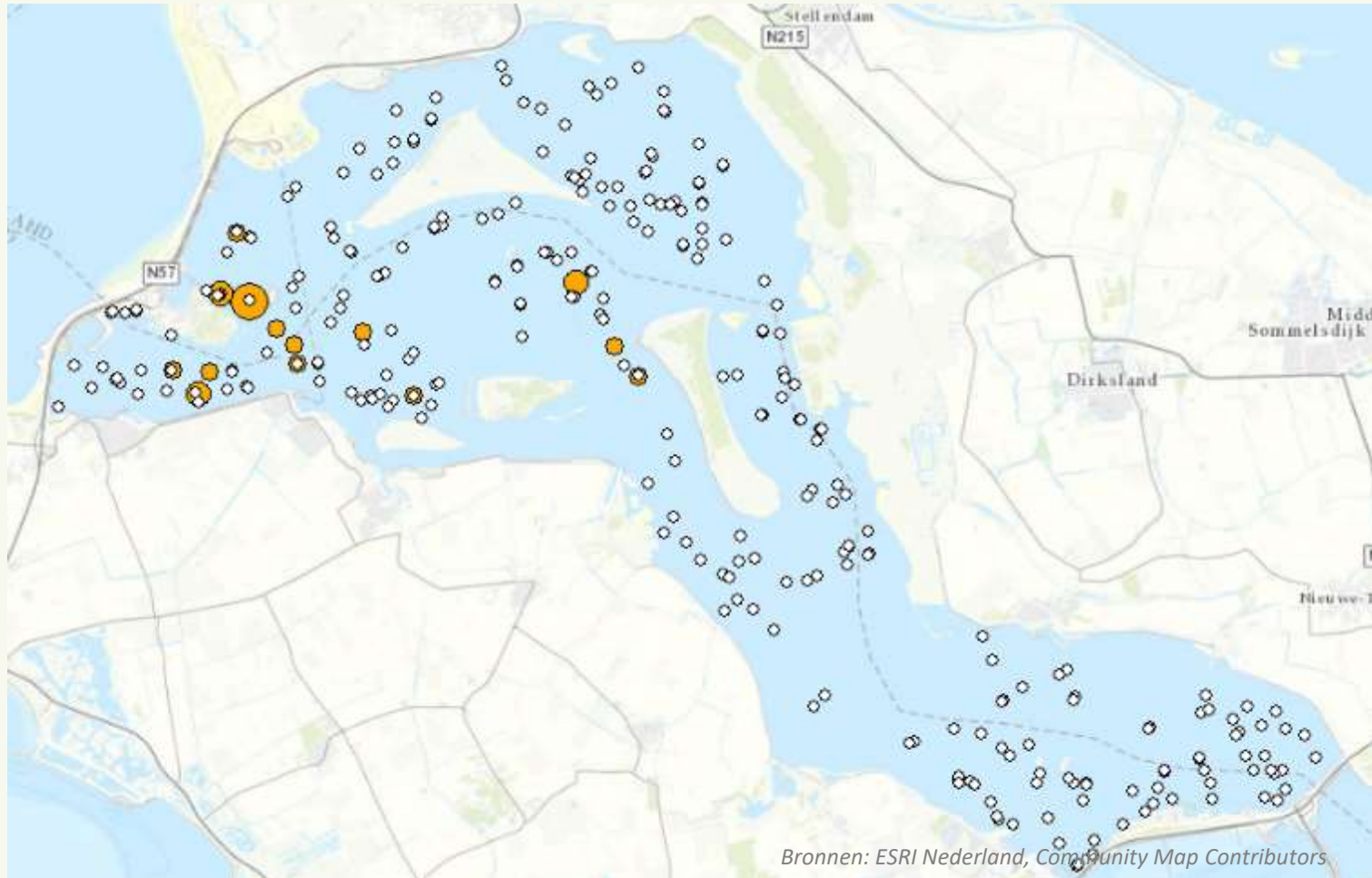




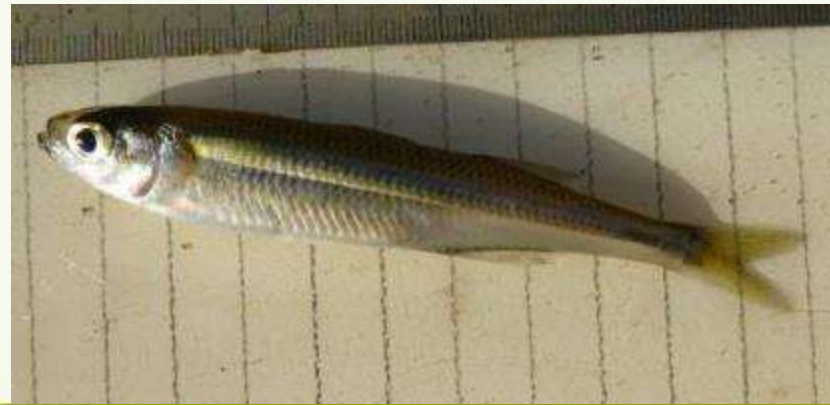
2. Invloed habitat



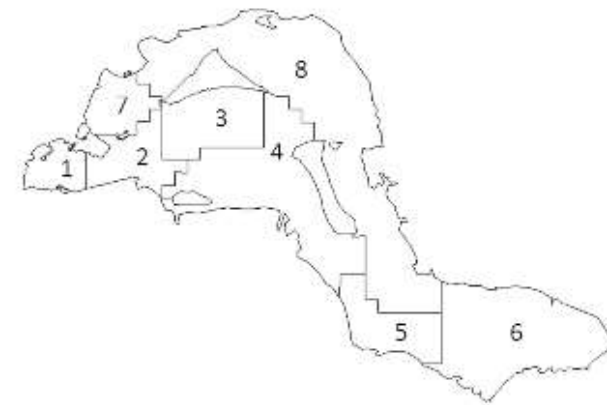
2. Invloed habitat



3. Waterkolom/bodem

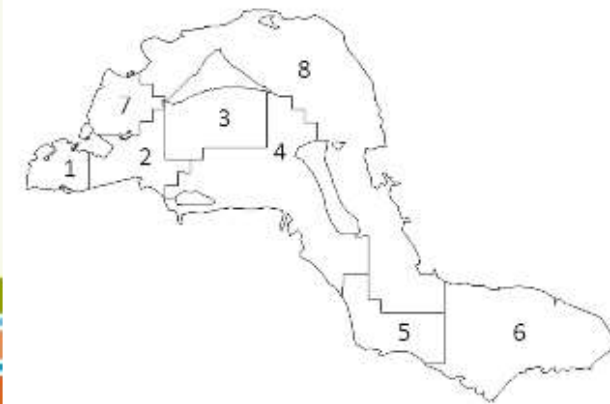
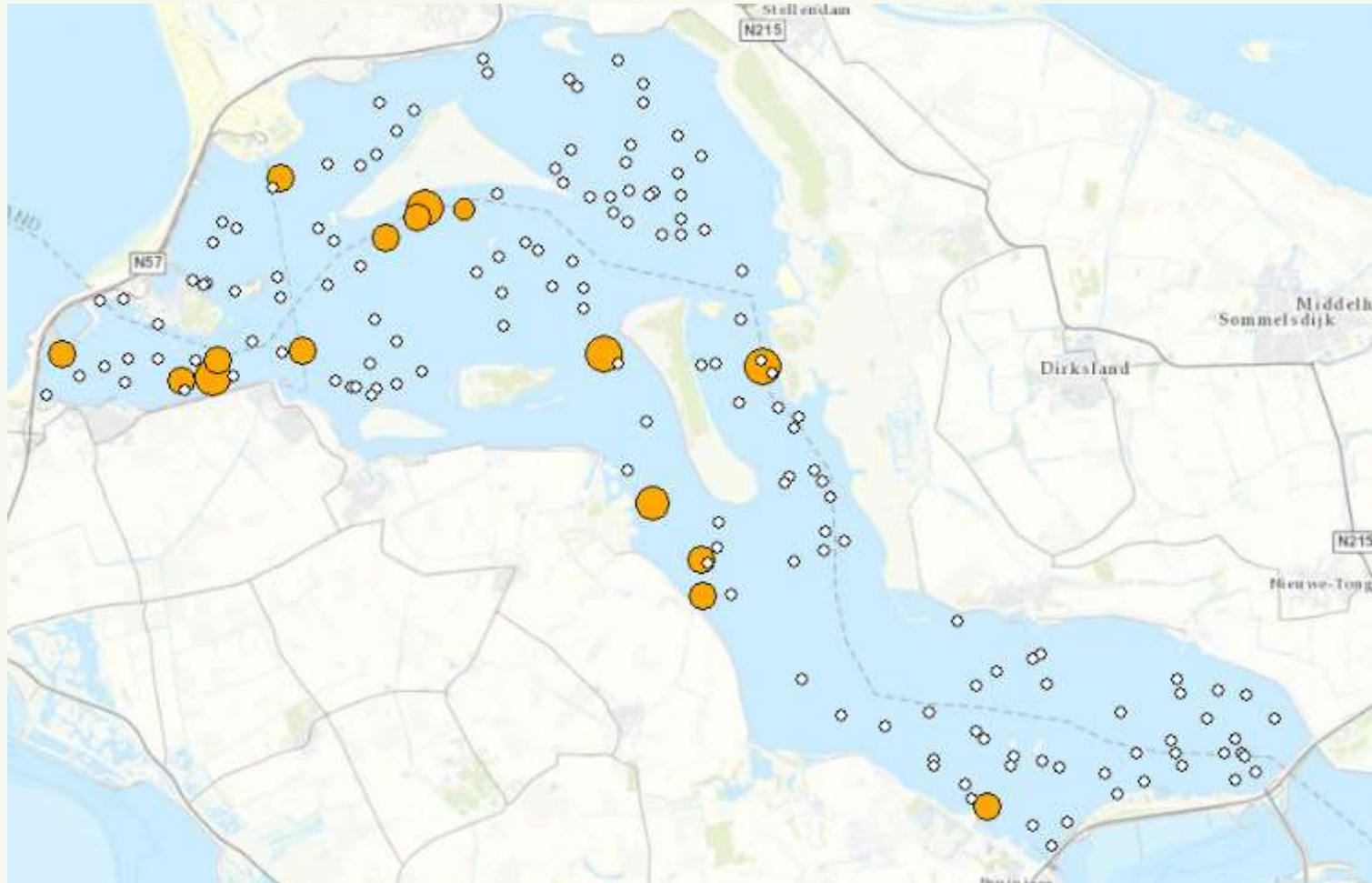


Dominantie van sprot en haring in waterkolom, in mindere mate koornaarvis. Weinig wijting gevangen.



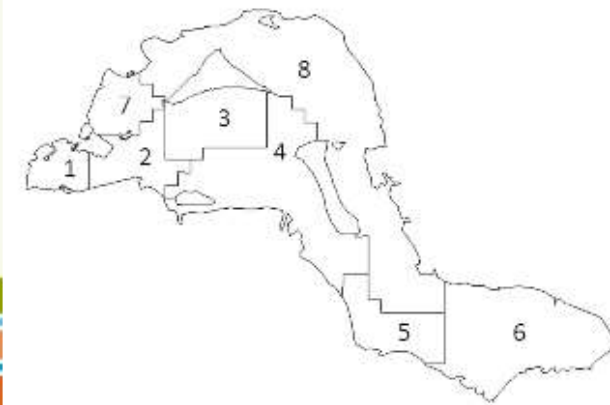
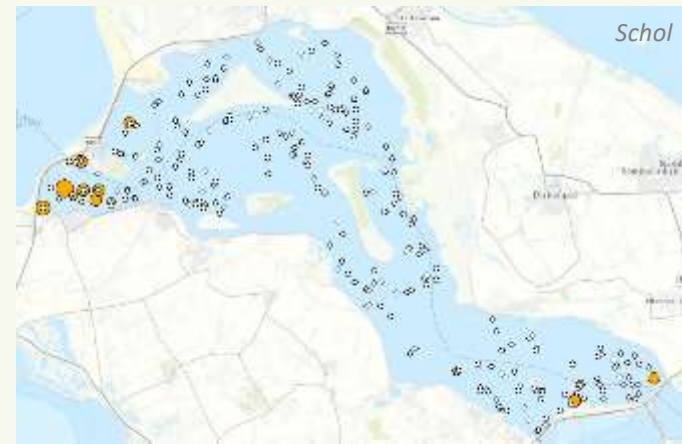
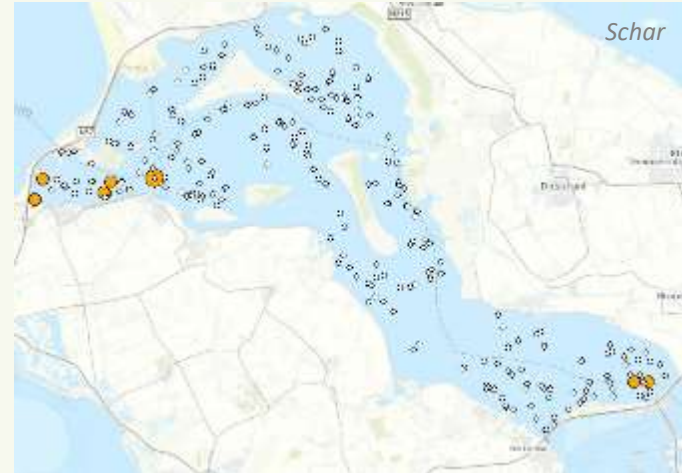
3. Waterkolom/bodem

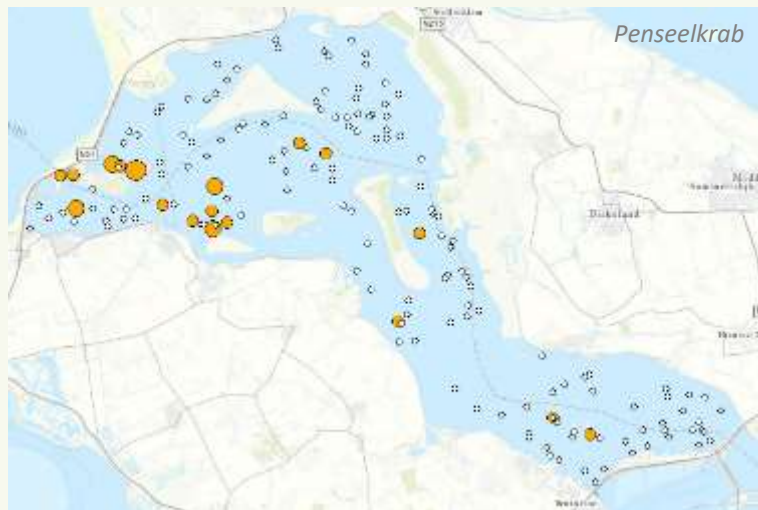
Pelagisch plaatselijk ook
grote aantallen kwallen
aanwezig...



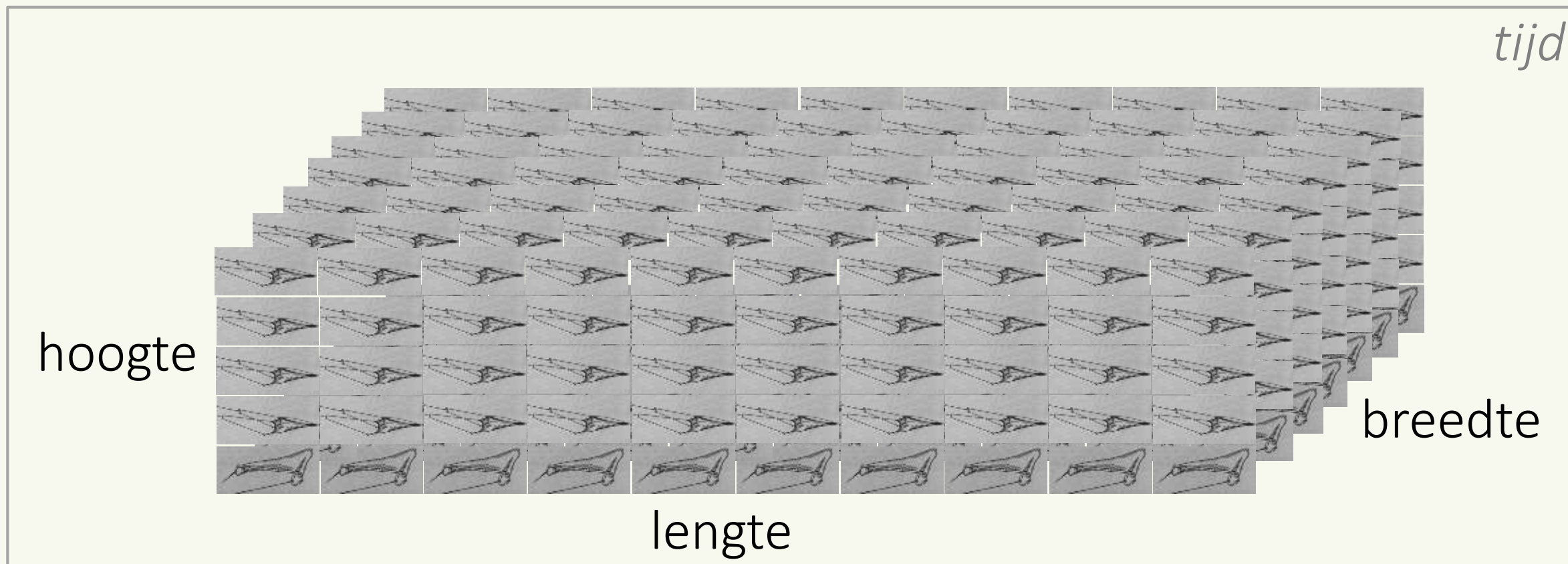
3. Waterkolom/bodem

Dominantie van grondels
(brakwatergrondel,
dikkopje, zwarte grondel)
tegen bodem. Weinig
platvissen aangetroffen.





Hoe brengen we de visstand in een dynamisch systeem als het Grevelingenmeer in beeld?



- 25 vissoorten
- Visbiomassa beperkt, aantal vissen relatief groot.
- In voorjaar weinig vis aangetroffen in ondiepe delen.
- Grootste visbestanden nabij Brouwerssluis en in mindere mate Flakkeese spuisluis.
- Dominantie van sprat en haring in waterkolom, in mindere mate koornaarvis.
- Dominantie van grondels (brakwatergrondel, dikkopje, zwarte grondel) tegen bodem.
- Weinig platvissen en wijting aangetroffen.

